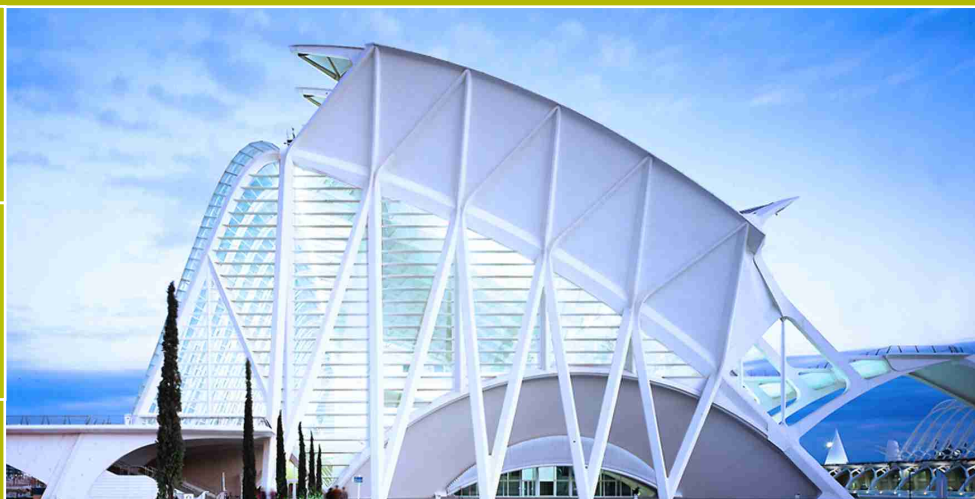
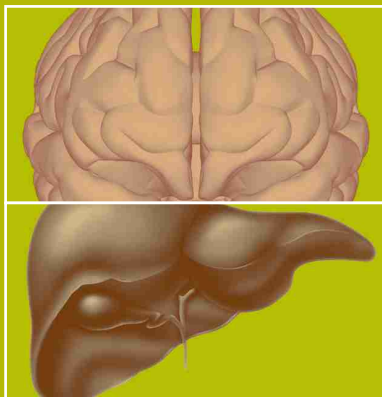


# CÁTEDRA SANTIAGO GRISOLÍA

## FUNDACIÓN CIUDAD DE LAS ARTES Y LAS CIENCIAS



September 17-19, 2009  
Valencia, Spain

international  
SYMPOSIUM ON

# HEPATIC ENCEPHALOPATHY

#### SPEAKERS

Roger F. Butterworth; Susanne Keiding; Dieter Häussinger; Michael D. Norenberg; Jan Albrecht; Magdalena Zielinska; Sophie Lotersztajn; Samir Ahboucha; Javier Saez-Valero; Vicente Felipo; Alejandro A. Rabinstein; Rodrigo Jover; Omar Cauli; N. Jan Shah; Rakesh K. Gupta; Juan Córdoba; Finn S. Larsen; Rajiv Jalan; Regina Rodrigo; Julia Wendon; Andrea Kelly; Christopher O. Record; Andrea Stracciari; Karin Weissenborn; Marsha Y. Morgan; Jasmohan S. Bajaj; Piero Amodio; Andrew A. M. Morris; Mariano Malaguarnera; Manuel Romero-Gómez.

#### SYMPOSIUM SECRETARIAT

Cátedra Santiago Grisolía  
Fundación Ciudad de las Artes y las Ciencias - Comunitat Valenciana  
Paseo de la Alameda, 42-B, 1.º 1.ª  
46023 Valencia, Spain  
TEL: 0034 96 197 4670  
Fax: 0034 96 197 4598  
E-mail: catedrasg@cac.es  
www.fundacioncac.es/catedrasg

#### CALL FOR ABSTRACTS

Participants are invited to submit abstracts written in English for oral or poster presentation, the majority being presented as poster. Acceptance will be based upon the quality and relevance of the submissions. Deadline expires on **July 10th, 2009**.

#### LANGUAGE

The lectures will be given in English with simultaneous translation into Spanish.

#### SCIENTIFIC COMMITTEE

**Vicente Felipo**  
Laboratory of Neurobiology, Centro de Investigación Príncipe Felipe, Valencia, Spain.

#### VENUE

Auditorium Santiago Grisolía  
Science Museum Príncipe Felipe  
Ciudad de las Artes y las Ciencias  
Avenida Autopista del Saler, 7  
46013 Valencia, Spain

#### ORGANIZING COMMITTEE

**President: Vicente Felipo**  
Director of Cátedra Santiago Grisolía and of Laboratory of Neurobiology, Centro de Investigación Príncipe Felipe, Valencia, Spain.

#### REGISTRATION FEE

Up to July 24th: 100 €  
After July 24th: 200 €  
Students: 50 €

Registration fee for participants includes scientific sessions, coffee breaks and the conference material.

A certificate of attendance will be given to all participants.

with the ORGANIZATION and COLLABORATION of

with the SPONSORSHIP of



Premios Rey Jaime I  
Bajo el patronazgo y presidencia de honor de S.M. El Rey





**"Andres T. Blei Lecture"**

*Roger F. Butterworth.* Hôpital Saint-Luc C.H.U.M. Montreal, Canada.  
**Cerebral inflammation in liver failure.**

**Mechanisms of ammonia toxicity**

*Susanne Keiding.* Aarhus University Hospital. Aarhus, Denmark.  
**Brain ammonia and energy metabolism in hepatic encephalopathy. Analysis by positron emission tomography.**

*Dieter Häussinger.* Heinrich-Heine-Universität. Düsseldorf, Germany.  
**Oxidation of RNA in hyperammonemia and hepatic encephalopathy.**

*Michael D. Norenberg.* University of Miami School of Medicine. Miami, USA.  
**Role of NF-κB in ammonia toxicity.**

*Jan Albrecht.* Medical Research Center, Polish Academy of Sciences. Warsaw, Poland.  
**Mechanisms of cell protection in ammonia neurotoxicity.**

*Magdalena Zielinska.* Medical Research Center, Polish Academy of Sciences. Warsaw, Poland.  
**Modulation of the NO-cGMP pathway by glutamine.**

**Neurotransmission**

*Sophie Lotersztajn.* INSERM, U 841, Hôpital Henri Mondor. Créteil, France.  
**The cannabinoids system in liver disease and hepatic encephalopathy.**

*Samir Ahboucha.* Hôpital Saint-Luc C.H.U.M. Montreal, Canada.  
**The neurosteroids system in hepatic encephalopathy.**

*Javier Saez-Valero.* Universidad Miguel Hernández-CSIC. Alicante, Spain.  
**Brain cholinergic alterations in liver failure. Role in cognitive function.**

*Vicente Felipo.* Centro de Investigación Príncipe Felipe. Valencia, Spain.  
**Selective regional alterations in GABAergic tone in brain in chronic hyperammonemia in vivo. Role in cognitive impairment.**

**Cerebral edema**

*Alejandro A. Rabinstein.* Mayo Clinic, Rochester. Minnesota, USA.  
**Cerebral edema: types, mechanisms and treatments.**

*Rodrigo Jover.* Hospital General de Alicante. Alicante, Spain.  
**Vasogenic and cytotoxic edema in patients with acute, chronic or acute on chronic liver disease.**

*Omar Cauli.* Centro de Investigación Príncipe Felipe. Valencia, Spain.  
**Vasogenic and cytotoxic edema in brain in animal models of acute or chronic hepatic encephalopathy and hyperammonemia.**

*N. Jan Shah.* Forschungszentrum Jülich GmbH. Jülich, Germany.  
**Quantitative cerebral water content mapping in hepatic encephalopathy.**

*Rakesh K. Gupta.* SGPGIMS. Lucknow, India.  
**Advances in the Magnetic resonance imaging in patients with liver failure and hepatic encephalopathy.**

**Acute liver failure**

*Juan Córdoba.* Hospital Vall d'Hebron. Barcelona, Spain.  
**Metabonomic analysis of hepatic encephalopathy progression during acute liver failure.**

*Finn S. Larsen.* Rigshospitalet University Hospital of Copenhagen. Copenhagen, Denmark.  
**Cerebral hemodynamic alterations in acute liver failure. Underlying mechanisms and role in death.**

*Rajiv Jalan.* Royal Free and University College Medical School. London, UK.  
**Brain inflammation in acute liver failure and its relationship with intracranial hypertension and death.**

*Regina Rodrigo.* Centro de Investigación Príncipe Felipe. Valencia, Spain.  
**Acute liver failure-induced death of rats is delayed or prevented by blocking NMDA receptors in brain.**

*Julia Wendon.* King's College Hospital. London, UK.  
**Intensive care management of acute liver failure.**

**Neurological alterations**

*Andrea Kelly.* Children's Hospital of Philadelphia. Philadelphia, USA.  
**Hyperinsulinism/hyperammonemia syndrome: alterations in cerebral function and molecular mechanisms.**

*Christopher O. Record.* Newcastle Upon Tyne Hospitals NHS Trust. Newcastle Upon Tyne, UK.  
**Hepatic encephalopathy after transjugular intrahepatic portosystemic shunt insertion.**

*Andrea Stracciari.* S. Orsola-Malpighi University Hospital. Bologna, Italy.  
**Cognitive functioning in chronic acquired hepatocerebral degeneration.**

*Karin Weissenborn.* Medizinische Hochschule Hannover. Hannover, Germany.  
**Cognitive alterations in patients with hepatic encephalopathy.**

*Marsha Morgan.* The UCL Institute of Hepatology. London, UK.  
**Alterations in sleep and in circadian rhythms in patients with liver disease.**

*Jasmohan S. Bajaj.* Virginia Commonwealth University and McGuire VA Medical Center. Richmond VA, USA.  
**Minimal hepatic encephalopathy and daily life.**

*Piero Amodio.* University of Padova. Padova, Italy.  
**Electroencephalographic staging of hepatic encephalopathy.**

**Treatments**

*Andrew A. M. Morris.* Royal Manchester Children's Hospital. Manchester, UK.  
**Neonatal hyperammonemia, main causes and treatment.**

*Rajiv Jalan.* Royal Free and University College Medical School. London, UK.  
**Ornithine-phenylacetate for the treatment of hyperammonemia and hepatic encephalopathy.**

*Mariano Malaguarnera.* University of Catania. Catania, Italy.  
**Probiotics and acetylcarnitine in the treatment of minimal hepatic encephalopathy.**

*Manuel Romero-Gómez.* Hospital Universitario de Valme. Sevilla, Spain.  
**Rifaximin for the treatment of hepatic encephalopathy.**